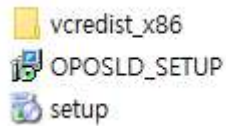
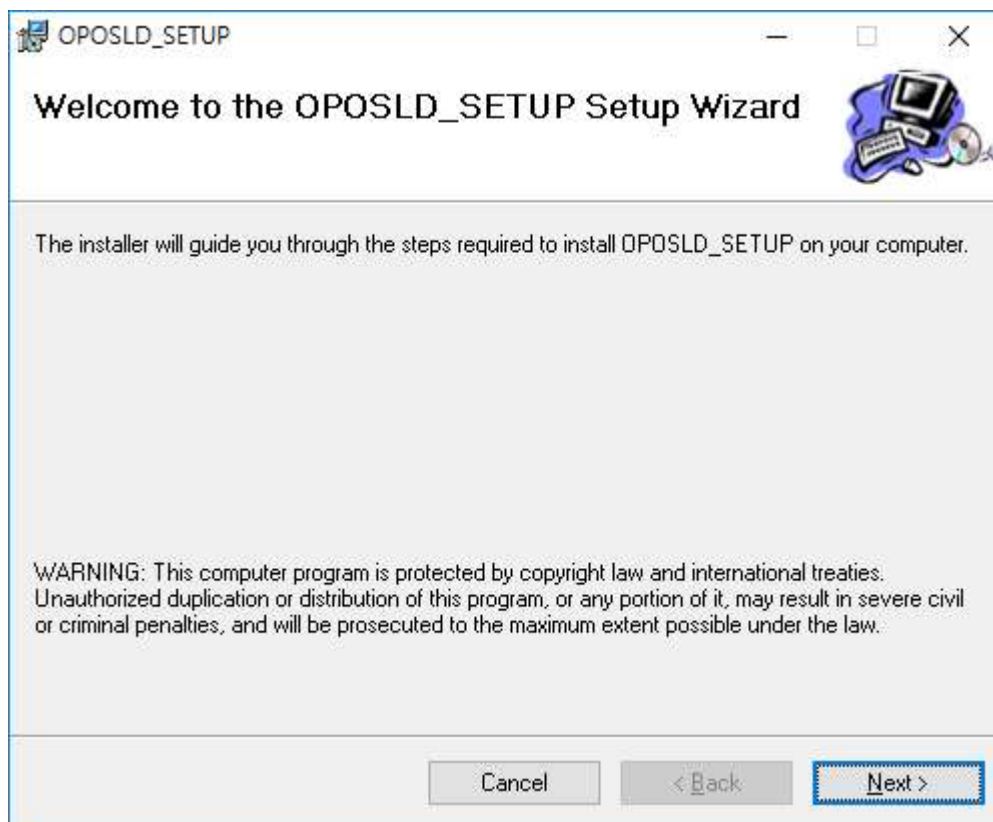


[ OPOSLD Setup ]

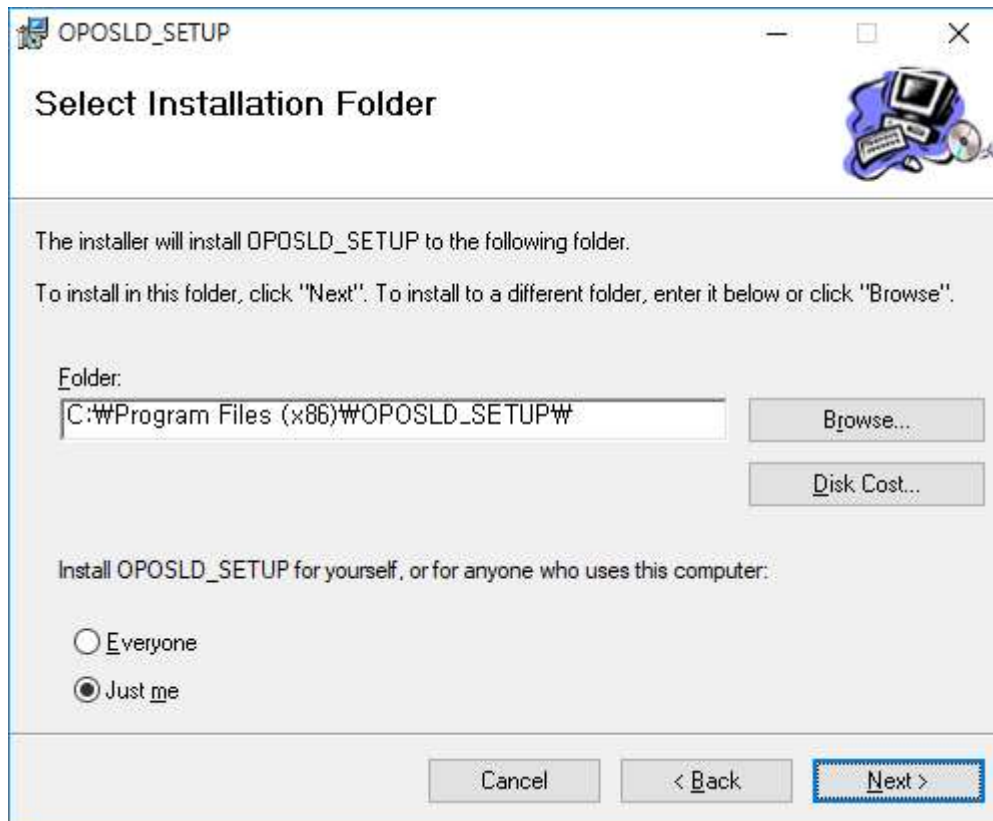
1. Please release the compressed file : OPOSLD\_SETUP.zip
2. You can find one folder and two setup files as below :



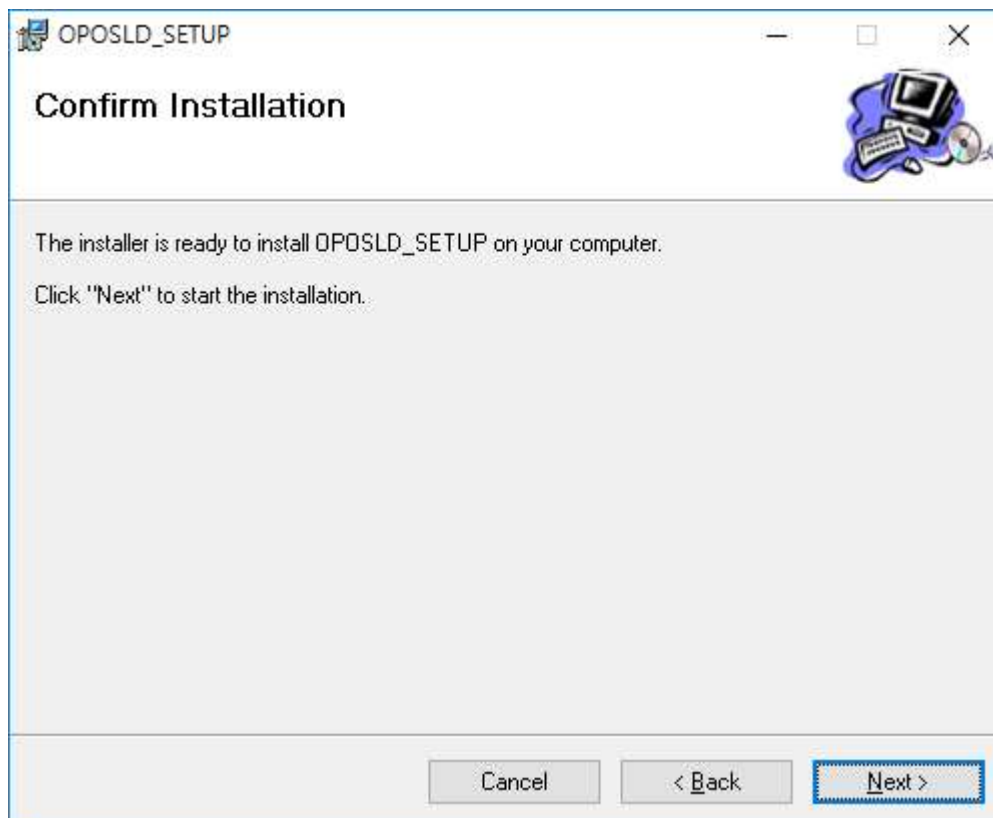
3. Please double-click the setup.exe (If the Visual C++ 2008 Redistributable already installed in your computer than you may executes OPOSLD\_SETUP.msi)



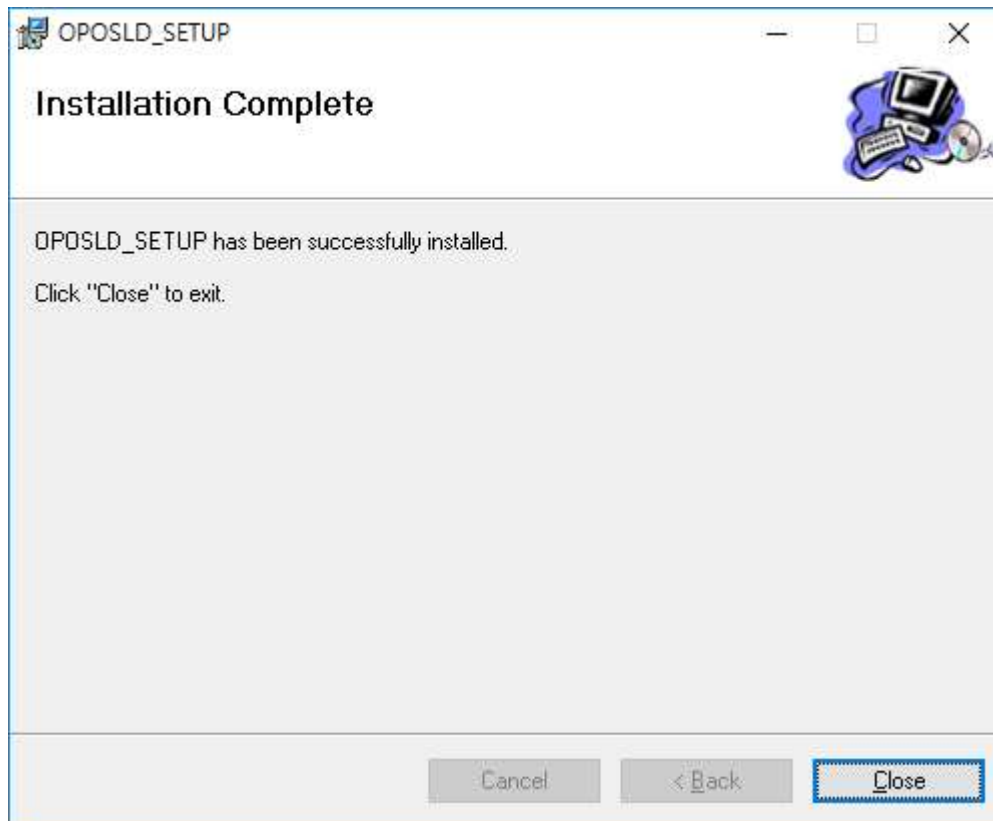
Next...



Next...







Next



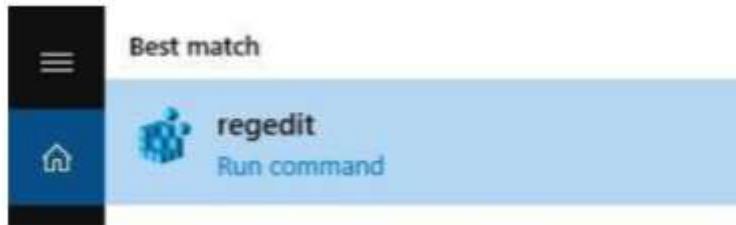
4. You can find several files at the directory C:\Program Files

(x86)\WOPOS\_LD\_SETUP as bellow :

-  LD\_SERIAL.dll
-  OPOSLineDisplay.ocx
-  OposReg\_Install
-  OposReg\_Uninstall

[ How to use OPOS Driver ]

- 1) At first, open the registry on your computer. (by execute regedit.exe at the command mode)



- 2) You can find the settings of LineDisplay device at the installed location as below.

